

# TRANSECT

BIGELOW LABORATORY FOR OCEAN SCIENCES / SUMMER 2023



**2**

Advancing  
Education and  
Innovation

**6**

The Fate  
of Forever  
Chemicals

**9**

Field Notes:  
Costa Rica



## Message from the President

Summer is an exciting time at Bigelow Laboratory! In mid May, our Keller BLOOM program brought 16 students from across the state to learn and live at our laboratory for a week-long, immersive experience doing actual research. The next week, 25 summer interns arrived to begin their 10-week dive into our global ocean science. Professional development courses on maintaining algae, identifying harmful species, and science education will bookend our summer programs, drawing participants from around the country to learn from our scientists.

All of this activity is particularly exciting this year, as we prepare for construction of the new center for ocean education and innovation that we just announced (page 2). Our work and staff have doubled since we moved into our current laboratory a decade ago, and this major addition to our campus — along with the fundraising initiative we launched this summer to support related work — will be an evolutionary leap for the laboratory.

I invite you to explore the growing difference we're making in the world in our 2022 Impact Report, which you'll find on page 10. You'll see a few of our favorite examples of recent work that advanced our major research themes. It's incredibly heartening to review this snapshot of our impact. We're taking on some of the planet's biggest challenges, and we are making progress!

On the pages that follow our Impact Report, you'll find a list of the visionary donors who made that impact possible. I am immensely grateful to each individual and organization you see there. Their generosity — and yours — empowers us to make discoveries, create urgently needed solutions, and inspire our current and future leaders to enact societal changes that are so desperately needed.

It's thrilling to look back and see how far we've come, and even more so to look ahead to the future. At the conclusion of a national search this spring, we selected Dr. Beth Orcutt to shepherd our research portfolio as our new vice president for research. I know the impact of our science will continue to grow with her support.

Beth came to Bigelow Laboratory as a senior research scientist in 2012. She has joined over 30 research expeditions and spent more than 600 days at sea. She is widely recognized as a leader in the study of deep-sea microbes. In the months prior to her appointment, she demonstrated remarkable care for the role and passion for our mission as interim vice president, and I know she's just getting started!

With these major additions to both our facilities and our staff, we are moving into a new era at Bigelow Laboratory. I'm so proud to be part of this team and the important work that your generosity makes possible.

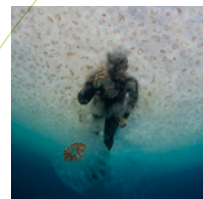
*Deborah A. Bronk*

DEBORAH A. BRONK, Ph.D.



# CONTENTS

2	Major Expansion to Advance Ocean Education and Innovation
5	Café Sci 2023
6	The Fate of Forever Chemicals
9	Field Notes
10	Impact Report 2022
14	Thanks to our Donors



### ON THE COVER

New research aided by Bigelow Laboratory scientists showed that salps, a widespread gelatinous organism, play an outsized role in the ocean's biological carbon pump. By transporting carbon from the surface to the deep sea, the process helps the ocean remove more carbon dioxide from the atmosphere. Read more at [bigelow.org/EOS-salps](http://bigelow.org/EOS-salps).

Photo: Paul Caiger

DESIGN Springtide Studio  
PRINTING J.S. McCarthy Printers



**CHAIN-FORMING DIATOMS** from the genus *Thalassiosira* provide an important source of nutrition to the base of marine food webs. *Thalassiosira* was the first single-celled marine algae to have its genome fully sequenced. That work was made possible in part by former Senior Research Scientist Robert Guillard, who isolated the strain that was used in this pioneering work.

Photo: Laura Lubelczyk



# Major Expansion to Advance Ocean Education and Innovation

A new center will open spring 2025 and bring dedicated spaces for training, collaboration, and solutions development.

**O**n June 8, World Ocean Day, Bigelow Laboratory announced an initiative to create a transformative new center for ocean education and innovation. Embodied by a \$30 million, 25,000-square-foot laboratory addition, the center will revolutionize Bigelow Laboratory’s education and solutions-focused work.

Dedicated teaching labs and classrooms will enable more students and scientists to get hands-on training with cutting-edge techniques. New laboratories will expand support for green business innovation and enable the addition of four more research groups. Newly endowed funds will provide seed grants for exploring promising, creative ideas. And a large and flexible forum will serve as a hub for international scientific collabora-

tion and facilitate ocean solutions among local communities here in Maine.

“Research to understand the foundation of global ocean health will always be at the core of our work,” said Deborah Bronk, president and CEO. “But our staff has doubled since we moved into our current space in 2012, and I’m excited by the growing ways we’re sharing what we learn and applying it to pressing societal problems.”

Groundbreaking is planned for October, with completion slated for spring 2025. Construction and future maintenance is being supported by an \$8 million gift from the Harold Alfond Foundation — as well as more than \$9 million from individual and institutional donors, and \$12 million in federal funding through the National Institute of Standards and Technology 2023 Construction Grant Program.



**LEFT** A rendering of the front of Bigelow Laboratory shows the planned expansion. **BELOW** Hannah Braslau, left, and Katie Baker undertook research on environmental DNA as interns in 2022.

Fundraising will continue through June 2024 to complete the resources needed for the center and the additional education, fundamental research, and solutions-focused initiatives it will enable. Since 2020, Bigelow Laboratory has raised more than \$61 million from a variety of partners and donors to support the initiatives set forth in its 2020 Strategic Plan, of which the new center is a critical component.

“We’re incredibly grateful to our federal representatives, donors, and all those who are helping to raise these vital funds,” said Bill Burgess, chair of the board of trustees. “As the institute nears its fiftieth anniversary next year, this center for ocean education and innovation points to a bold vision for what Bigelow Laboratory will become during the next 50 years.”



## OCEAN EDUCATION

The new center will be purpose-built for flexibility. At the heart of a suite of teaching labs and classrooms is a two-story dynamic forum that will serve as a gathering space for scientists, students, and professionals alike. Together, these spaces will enable an expanding constellation of educational programs at Bigelow Laboratory. This growth will require focused effort to ensure that the programs’ full potential is reached, which is why the funding for the center includes the addition of a new role: marine educator.

“Education and outreach are critical outcomes of our research efforts, as well as an integral component of our mission,” said Ben Twining, senior research scientist and vice president for education at Bigelow Laboratory, “The investments in these new facilities and staff, along with the recent addition of our 48-foot research vessel, will allow us to greatly expand access to our hands-on education programs that already inspire hundreds of students each year.”

From weeklong experiences for high school students to semester-long experiences for undergraduates, Bigelow Laboratory education programs serve students all the way through their doctoral studies. Twining said that the new center will help enrich existing programs and broaden the student base they serve.

“All of our programs center on giving students authentic experiences doing real science alongside practicing scientists,” Twining said. “This has required using



**A RENDERING** of the recently announced expansion of Bigelow Laboratory shows the new center in the foreground with the existing facilities behind.



laboratories that are otherwise needed for important research projects and are not always ideal for working with large student groups. The new center will really boost the reach and impact of our education programs.”

This expanding reach doesn’t stop at students, however, as the new space will also allow for more professional development opportunities for an international community of educators, scientists, and representatives from industry, government, and Indigenous groups. This means the center will have an impact in ways both academic and economic.

Single- and multi-day courses and workshops are held throughout the year at Bigelow Laboratory, but those efforts are constrained by the current facilities. In addition to increasing access to those offerings, the 300-seat forum will enable the institute to host large collaborative events for both science and industry.

“The kind of education and connection that will be happening in this space reaches far beyond the transfer of knowledge,” said Mike Lomas, a senior research scientist who runs professional education programs on topics ranging from maintaining algal cultures to identifying harmful algal species. “It will also become a place where we are able to translate foundational science into a sustainable economy — one with local, national, and global reach.”

#### OCEAN INNOVATION

“I’ve always said that our science shines brightest when it cross-pollinates with other fields and disciplines,” President Bronk said. “The greatest opportunities for discovery and innovation happen at the intersection of different specialities and ways of thinking.”

The center for ocean education and innovation is designed to harness this potential and foster the sort of interdisciplinary science that is the hallmark of Bigelow Laboratory. The laboratory expansion will have space for four additional research groups and will be filled with collaborative spaces for solutions-focused science. The strategic fundraising initiative surrounding the new center will also support the science — and people — that it takes to turn foundational discoveries into actionable solutions.

“I’m really looking forward to a dedicated space where teaching and learning can happen between scientists, students, industry, and other community members. It’s the kind of collaborative setting that we need to figure out how

### ‘This center for ocean education and innovation points to a bold vision for what Bigelow Laboratory will become during the next 50 years.’

to navigate our rapidly changing environment,” said Nick Record, senior research scientist and director of the Tandy Center for Ocean Forecasting at Bigelow Laboratory.

The last two years have been the hottest on record for the Gulf of Maine. As the ecosystem responds to these changing conditions, opportunities and obstacles abound. New insights and tools are desperately needed. Record’s science focuses on using advanced computer algorithms and artificial intelligence to create reliable forecasts about life in the ocean, from alerts for imminent harmful algal blooms to identification of future right whale habitats.

Perhaps the most significant obstacle to early stage research into new solutions — and into creative foundational research approaches — is funding. These projects start with an invigorating spark of inspiration, but data is needed before they’re attractive to funders. The fundraising initiative integral to the new center aims to address that issue by creating a permanent seed funding program that would provide financial support for promising, early stage projects.

“Exploring our most creative ideas will not always work out exactly as expected, but they can take us somewhere even more exciting,” said Senior Research Scientist Manoj Kamalanathan, who recently received a seed funding grant. “They also represent some of the best opportunities for big leaps forward in our impact and understanding.”

Kamalanathan was funded to explore the use of algae as a living fertilizer. His initial results indicated that the right blend of microalgal species might be able to live in the soil, produce the nutrients that will enhance the quality of the soil, and eliminate the environmental harm created by chemical fertilizers. The seed grant will allow him to scale up his experiments and build evidence that it’s an idea worth further investment.

“The innovative products and solutions we’re working on all hinge on the use of microalgae and seaweeds — living organisms — which makes the science and the solution intertwined and inseparable,” Bronk said. “Our insights are vital to businesses working to create sustainable products and processes through ocean life. There’s so much promise there, and it’s so exciting to think about all the innovative projects this new center will enable in the coming years.”

**THE EXPANSION** will support the solutions-focused work of Senior Research Scientist Manoj Kamalanathan and other Bigelow Laboratory researchers.



## Join us for this popular series — virtually or in person at our laboratory!

Café Sci is a fun, free way for you to dive into global ocean issues and opportunities with leading scientists.

#### JULY 11

**Tipping Points**  
A Multimedia Performance  
*Halcyon String Quartet with  
intro by Dr. Deborah Bronk*

#### JULY 18

**Science from a Seed**  
Growing Bold Science  
from Big Ideas  
*By Dr. Catherine Mitchell  
& Dr. Manoj Kamalanathan*

#### JULY 25

**Hands-On Inspiration**  
The Value of Authentic  
Research Experiences  
for Student Scientists  
*By Dr. Ben Twining*

#### AUGUST 1

**AI and the Ocean**  
How Artificial Intelligence is  
Mapping our Ocean’s Future  
*By Dr. Nick Record*

#### AUGUST 8

**Innovation through  
Collaboration**  
The Power of Science and  
Business Partnerships  
to Advance the Blue Economy  
*By Dr. Mike Lomas*

#### AUGUST 15

**Coast-Cow-Consumer**  
Using Algae to Reduce the  
Dairy Carbon Hoofprint  
and Build Rural Prosperity  
*By Dr. Nichole Price*

**SPACE IS LIMITED! REGISTER TODAY AT [bigelow.org/cafesci](https://bigelow.org/cafesci)  
TUESDAYS AT 5 P.M. | JULY 11 - AUGUST 15**

SPONSORED BY  
**HMPayson**



# The Fate of Forever Chemicals

As the scope and dangers of PFAS pollution come into focus, Bigelow Laboratory scientists are working to expand monitoring and testing capacity in Maine waterways.



BIGELOW LABORATORY RESEARCHERS are working with community groups, such as Friends of Casco Bay, to develop a robust monitoring program to identify PFAS hotspots across Maine.

Photo: Robby Lewis-Nash, Friends of Casco Bay

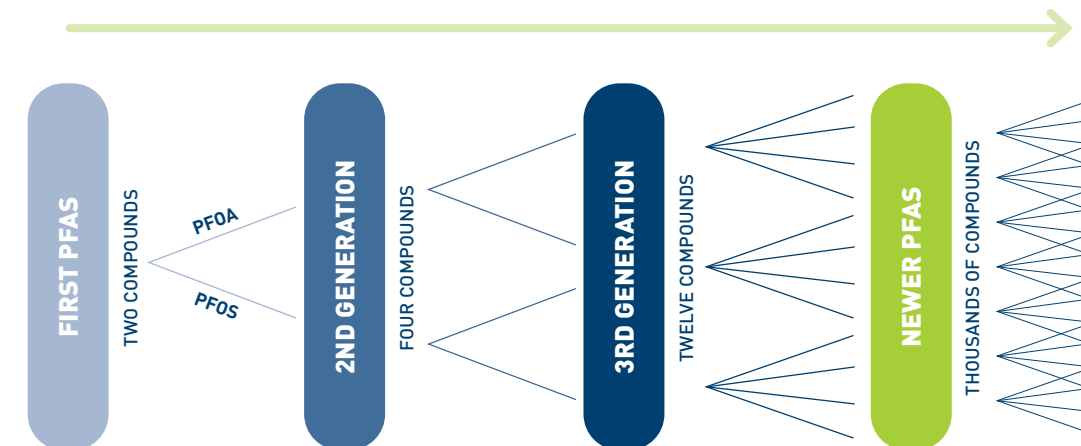
In the late 1930s, a researcher working for the chemical manufacturer DuPont accidentally discovered a new compound, polytetrafluoroethylene. Within 10 years, DuPont was producing millions of pounds a year of the substance, more commonly known by its trademark name, Teflon. Within a few decades, PTFE and similar chemicals binding together carbon and fluorine were being used in everything from non-stick pans and fast food wrappers to firefighting foam and pesticides. At that time, these chemicals, lauded for their water resistance and durability, were known as “miracle chemicals.” Today, they’re more commonly — and critically — referred to as “forever chemicals.”

Though people now often refer to “PFAS” as a single chemical, in reality, over 9,000 per- and polyfluoroalkyl substances have been developed. Though not all have been widely studied, many of those that have, have been found to increase the risk of cancer. They can also disrupt hormonal and reproductive systems, leading to develop-

ment issues, increased cholesterol levels, decreased fertility, and even a weakened immune system. The Centers for Disease Control have found traces of four of the most common PFAS in the blood serum of nearly everyone they’ve tested since 1999. Ironically, many of the thousands of PFAS in circulation today were developed as replacements to avoid the issues of the original compounds. But each iteration showed the same problematic behavior and posed similar risks.

Few areas of Maine have been left untouched by PFAS contamination. Thousands of farms across the state, for example, used to regularly apply PFAS-contaminated sewage sludge to their farms as fertilizer, and the state’s Department of Environmental Protection has found that 20% of homes they’ve sampled close to those sites have levels of PFAS that exceed Maine’s interim drinking water standards. In 2021, a National Oceanic and Atmospheric Administration study of mussels in the Gulf of Maine also found PFAS at 40% of their sampling sites.

## Evolving Chemical Formulas & Increasing Attention



THE FIRST PFAS were designed with eight linked carbon molecules. As people realized the risks of those original compounds, scientists experimented with altered chemical formulas. They created new iterations of chemicals but never solved some of the basic environmental challenges. Most of these new substances are not yet part of the standard testing kit for PFAS.

On the flipside, though, the state is at the forefront of efforts to address this widespread problem. Maine is one of the few states, for example, that has established screening levels for PFAS contamination in agricultural products like milk, and, last year, Maine became the first state to ban the use of sludge on farms. In 2021, the legislature also passed a law banning the sale of most products that contain PFAS after 2030.

“The problem has been around for a while, but I think people are just now realizing the scale of it — like how much is around, how prevalent they are, and how little regulation there was of most of these compounds,” said Senior Research Scientist Christoph Aeppli.

For Aeppli, one of the biggest challenges with PFAS is just the lack of understanding of how these complex pollutants are impacting ecosystem health and their long-term fate in the environment. To date, most of his research has focused on oil spills.

“With oil, though, you can look back to 50-plus years of research that has been done,” Aeppli said. “With PFAS, the research is all much newer.”

There are other chemical differences between PFAS and what Aeppli calls “legacy pollutants” like oil. The latter are hydrophobic, so they don’t easily dissolve in water and, instead, build up on sediments and in fatty tissue. PFAS, in contrast, are much more soluble in water and can bind, not just to fat, but also to proteins in blood.

Aeppli highlights several other gaps in our understanding of PFAS at an ecosystem level, everything from how it is getting into the marine ecosystem to how it is transforming as it moves through systems and species. He says we are only starting to develop good models to understand the toxicity of various PFAS and how they

RESEARCH ASSOCIATE ERIN BEIRNE gathers water samples in Casco Bay for a new project monitoring PFAS in Maine waterways and mussels.

move through the food web.

Aeppli is working on a Sea Grant-funded project to start answering those questions. He’ll be sampling for PFAS in water, sediments, and mussels at two sites in Casco Bay starting this summer and fall, and then again next spring. Mussels are not only commercially important in Maine, but they also provide a good proxy for the uptake of pollutants in other species. The seasonal sampling, meanwhile, will give them a chance to see how PFAS concentration changes over the course of the year.

As for the sites themselves, Aeppli said they were chosen both to capture a range of potential sources of PFAS, such as Brunswick Naval Air Base, but also to leverage the work that local community groups, like Friends of Casco Bay and Friends of Merymeeting Bay, have already done. These groups have long-running monitoring programs so they already have a good understanding of the ecosystem and a lot of water quality data. Combining the funding and analytical expertise of Bigelow Laboratory with that deep, local knowledge can help inform the development



Photo: Christoph Aeppli



## 'It's a beneficial relationship, between helping the state address a real problem and contributing to a growing area of research.'

of robust monitoring programs to identify PFAS hotspots and understand what contamination means for aquatic organisms like shellfish.

Even closer to home, Aeppli and Senior Research Scientist Rachel Sipler, who directs Bigelow Laboratory's Water Health and Humans Initiative, are also working with the Boothbay Region Clean Drinking Water Initiative to assess PFAS in the reservoirs from which the community draws its summer water.

"Our reservoirs are just below the level of threatened ecosystems. We are at a crucial tipping point where we can ignore the issues until they become a significant risk or we can take action to change course and protect this critical resource," Sipler said. "This effort will fill gaps and help us really understand our system so that we can better predict and mediate changes long term."

Working with the Clean Drinking Water Initiative, a collaborative that includes various local stakeholders like the water district, Sipler is trying to develop a better understanding of PFAS contamination locally and how it might be changing. The water district, which last sampled for PFAS several years ago, is partnering to collect water samples this summer that will be processed at Bigelow Laboratory. Sipler hopes that this is the first step to a long-term collaboration to ensure the health and prosperity of our community.

"It's not a required monitoring component, but we can foresee it will be," Sipler said. "We're hoping to help Boothbay get ahead of the curve."

When it comes to being ahead of the curve, Bigelow Laboratory is also one of just two labs recently funded by the state to increase capacity within Maine and get state

accreditation to process PFAS samples, which requires a high level of technical expertise and advanced instrumentation. To that end, Aeppli's lab just installed a PFAS-dedicated liquid chromatography-mass spectrometer, the same type of instrument used by Bigelow Laboratory for shellfish toxin testing.

Once the accreditation is official, hopefully by the end of the year, the lab will begin taking samples from the Department of Environmental Protection and other potential clients — from agencies like the Department of Marine Resources to nonprofit groups and private citizens. In the meantime, though, they can process the samples collected for various research projects. Aeppli and Senior Research Scientist Manoj Kamalanathan, for example, will have a student this summer looking at the possibility of using algae to remove PFAS from water.

It's that sort of research expertise that makes Bigelow Laboratory's new testing service so potentially useful.

"For research, we're always pushing the detection limit and expanding the number of compounds we can detect, and that expertise helps us offer a cutting-edge service that keeps up with evolving regulations," Kamalanathan said. "It's a beneficial relationship, between helping the state address a real problem and contributing to a growing area of research."

Sipler agrees about the need for more data regarding the water quality threats facing Maine communities. But she stresses that it's not just to highlight risks but also to develop strategies to address problems before they get out of hand.

"We need to have information to be hopeful and secure the future we want for our communities," she said.



**LEFT** Research Associate Erin Beirne samples sediments as part of a PFAS monitoring program. **RIGHT** Senior Research Scientist Christoph Aeppli examines the new liquid chromatography-mass spectrometer installed in his lab to process PFAS samples.

Photos, left to right: Christoph Aeppli, Collin Sheehan

## FIELD NOTES



### Costa Rica

BY JULIA BROWN, Research Scientist

**O**n a local fishing pier in Puntarenas, Costa Rica, I sat among a group of weary scientists, none of whom I'd met before, waiting for the ferry. What showed up was a small covered boat with four long wooden benches blasting '90s pop rock. We hauled on our bags, crowded onto the benches, and began the short ride to the ship that would be our new home for the next six weeks, the R/V Atlantis.

This journey began 10 months earlier when my colleague Maria Pachiadaki, from Woods Hole Oceanographic Institute, approached me about joining a research expedition to the tropical Pacific Ocean. She was leading a project aimed at examining microbe-driven biogeochemical processes within the Eastern North Tropical Pacific Oxygen Minimum Zone (ENTP-OMZ) and wondering if I would be willing to lead research on viruses for her expedition.

The OMZ off the coast of southwest Mexico is a permanent feature of the ocean. Such zones exist around the world, some occurring naturally and others due to human influences such as agricultural runoff. Important steps in the global cycling of carbon, nitrogen, and sulfur happen within OMZs. Some of these processes generate potent greenhouse gasses. In a warming ocean, these zones will likely expand as the ocean's capacity to hold oxygen decreases.

Oxygen minimum zones are often referred to as "dead zones" because organisms that breathe oxygen, such as fish, cannot live in such areas. But OMZs are not devoid of

life. Many microbes thrive without oxygen, and these populations are what drive the cycling of carbon, nitrogen, and sulfur. There are clues that viruses, too, influence the cycling of nutrients, but very little is known about how exactly this happens.

With two girls under four years old at home, my immediate reaction to Maria's inquiry was, "I can't." But after sitting on the idea, and thinking about the science that could be done on such an adventure, "can't" turned into "why not?"

With my expertise in microbial genomics and viral ecology, and the data Maria and her team planned to collect, I saw an opportunity to carry out important research on the activity of viruses in oxygen minimum zones by collecting samples in parallel with those of the larger project.

Viruses are present everywhere in the ocean, and influence the ecology and evolution of the microbes they interact with in a number of ways. Little is known about viruses in oxygen minimum zones, particularly how they interact with and influence host populations. So I wrote a proposal for research funding, gave Maria the green light, and began preparations for the biggest science adventure I'd had in a decade.

One challenge to studying low oxygen systems is that oxygen is often toxic to life that is adapted to living without it. My colleagues on board addressed this challenge by running experiments deep below the surface for 18 hours at a time in a pair of drifting incubators. These long experiments were ideal for my sampling plan. While the incubators drifted, I collected tens of liters of water from the corresponding depth within the OMZ, filtered out larger organisms, and concentrated the remaining viral particles down more than 250-fold — a process that took 9 to 12 hours. Once I secure research funding, I will extract and sequence the genetic material from these samples and use computational techniques to identify viruses, microbes, and interactions between them using clues encoded within their genomes.

Life at sea was in stark contrast to life at home. The regimented "schedule" of my working family was replaced with an other-worldly adult life: meals made by the ship's galley and eaten with other adults, countless conversations with members of the science party and crew, nights spent reading and enjoying the evening sky. My days in the lab were long, but my time off was my own in a way I had not experienced since becoming a mom. I squeezed everything I could out of my time at sea, knowing the value of this opportunity, and the sacrifices my family and I were making to make this research happen.

Photo: J. Alexander



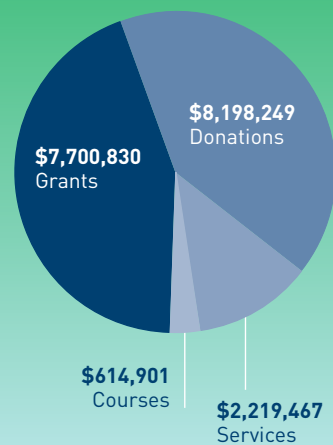
From the surface to the seafloor, from the tropics to the poles, from the tiniest viruses to global processes — Bigelow Laboratory scientists work on systems around the planet to study the foundation of ocean health.

What we're learning builds understanding of some of the greatest challenges society faces, enabling us to unlock the ocean's potential to improve the future for all life on Earth.

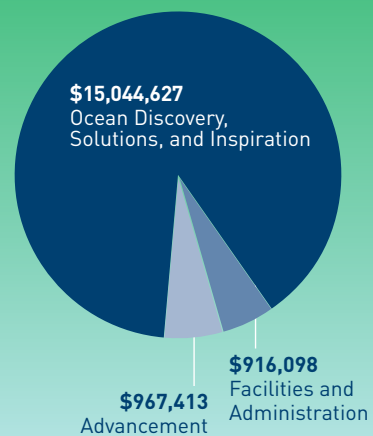
We hope you enjoy this look back at some of the ways our work made a difference last year.

### 2022 FINANCIALS JULY 1, 2021 – JUNE 30, 2022

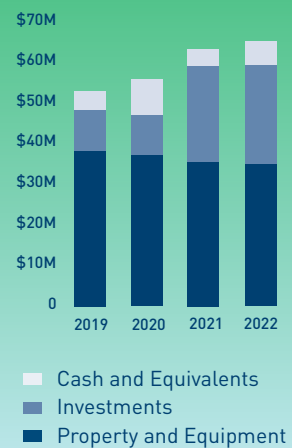
REVENUE **\$18,733,447** Total



EXPENSES **\$16,928,138** Total

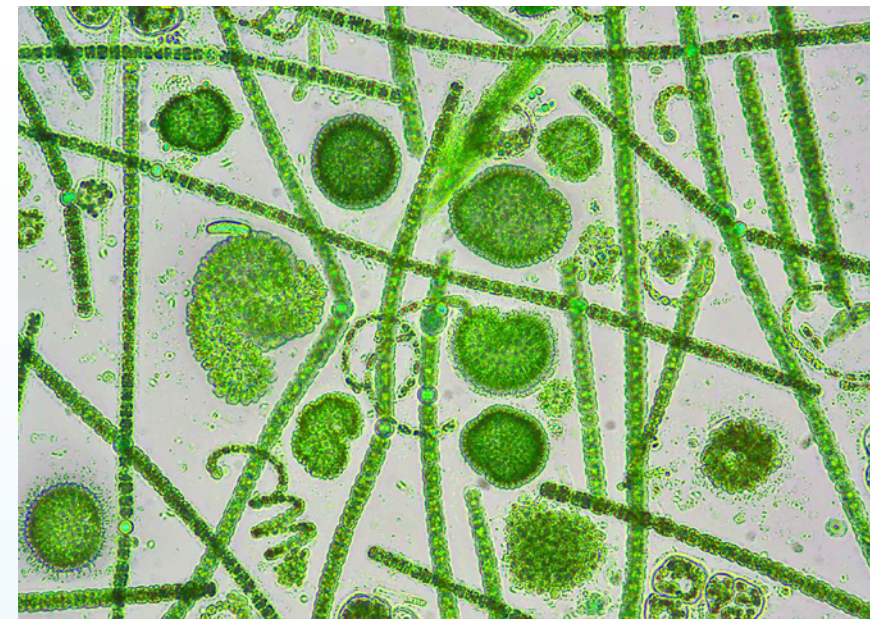


ASSETS 2019 – 2022

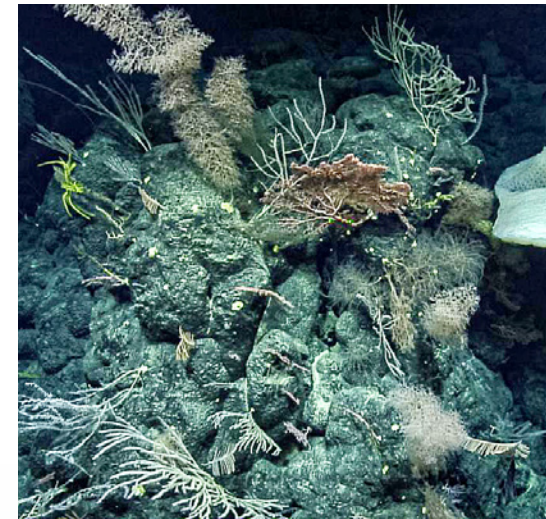


## Ocean Health and Function

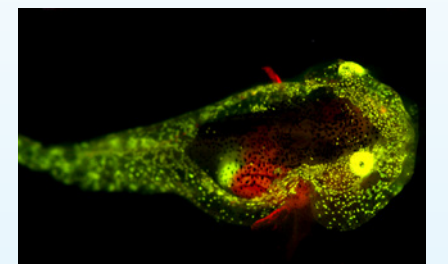
We reveal how the ocean works and how to better care for our planet.



**Harmful algal blooms are increasingly common around the world and pose a serious risk to wildlife, fisheries, and communities.** Bigelow Laboratory scientists continue to be at the forefront of efforts to better understand what causes these blooms and how to minimize their impact while also empowering scientists and government officials to monitor and respond to them. [bigelow.org/2022-habs](https://bigelow.org/2022-habs)



**Deep sea mountains are one of the least-understood parts of the planet.** Our researchers continued their work last year to better understand these environments, which are hubs of vast biological diversity — and potential sources of valuable minerals. This work is a first step to illuminating the consequences of human activity, such as mining, on these complex ecosystems. [bigelow.org/2022-deep-sea](https://bigelow.org/2022-deep-sea)



**Species living in polar environments have developed remarkable adaptations to survive in extreme conditions.** Our scientists recently discovered that the variegated snailfish, the only known biofluorescent polar fish, survives by directing significant resources to produce large amounts of antifreeze in its cells. Understanding these evolutionary strategies provides insight into how these species might adapt in our rapidly changing world. [bigelow.org/2022-polar-fish](https://bigelow.org/2022-polar-fish)



**Although rare, there are forms of cancer that are contagious.** Last year, our researchers found that a type of cancer that affects soft-shell clams could be spread through seawater. Understanding the prevalence of the disease and how it is transmitted is essential for minimizing its spread among this valuable species. [bigelow.org/2022-clam-cancer](https://bigelow.org/2022-clam-cancer)



# Our Changing Planet

We focus on key species to predict, combat, and adapt to climate change.



**The Arctic is one of the most vulnerable places to climate change in the world.** As part of the largest-ever Arctic research expedition, our scientists are providing new insights into how the atmosphere, water, and ice interact in this dynamic region. Their efforts set the groundwork for years of research to come on the complex workings and future of the Arctic. [bigelow.org/2022-arctic-future](https://bigelow.org/2022-arctic-future)

**Changes in ocean circulation are driving warm, salty water into the Gulf of Maine.** Last year, our researchers analyzed two decades worth of data to elucidate how the Gulf is changing and how fast it's warming. These changes aren't just altering the foundation of the food web locally, but they can also influence ocean processes well beyond our shores.

[bigelow.org/2022-gulf-transformation](https://bigelow.org/2022-gulf-transformation)



**The number of young lobsters in the Gulf of Maine has decreased in recent years.** Student-led research last year sought to better understand how well lobsters are surviving, and whether they're getting enough food, at this critical stage of development. Their findings illuminate how changing conditions are impacting the region's food web and this important fishery. [bigelow.org/2022-lost-lobsters](https://bigelow.org/2022-lost-lobsters)



**Carbon storage is an important strategy for reducing greenhouse gases in the atmosphere and combating climate change.** Our planet has already evolved ways to naturally remove carbon dioxide from the atmosphere and store it in the ocean. Bigelow Laboratory scientists are working with researchers from around the world on solutions to amplify those natural processes.

[bigelow.org/2022-carbon-capture](https://bigelow.org/2022-carbon-capture)



**Bigelow Laboratory's National Center for Marine Algae and Microbiota holds one of the world's largest and most diverse collections of algae.** It increased its holdings substantially last year, providing scientists around the globe with access to 1,400 new strains and vast genetic data. This expansion will encourage and enable new research into algae and its applications. [bigelow.org/2022-seaweed-research](https://bigelow.org/2022-seaweed-research)



**New techniques can allow us to better understand how marine organisms control the interactions between the atmosphere and oceans.** Our scientists developed a method for linking the genes and functions of cells, illuminating the relationship between an organism's genetic code and what it does in the environment. Their approach provides unprecedented insight into the role of microbes in ocean carbon cycling. [bigelow.org/2022-carbon-cycling](https://bigelow.org/2022-carbon-cycling)

**Bioinformatics is an emerging field for leveraging vast amounts of data to understand the microbes that shape life at a previously impossible level of detail.** Our scientists are utilizing cutting-edge computational techniques to analyze the genetic data of the millions of single-celled organisms that form the base of ocean food webs. [bigelow.org/2022-data-science](https://bigelow.org/2022-data-science)



## The Ocean's Potential

We develop the tools needed to unlock the opportunity of the ocean.



# GIVING OUR SINCERE THANKS

**Bigelow Laboratory is an independent, nonprofit institute. Our impact is only possible with the help of our community of supporters. Their generosity fuels our discoveries, powers our solutions, and enables us to inspire the next generation of ocean leaders.**

*The following list honors donors between May 1, 2022 and May 18, 2023. Deceased donors are noted with a caret (^). Those who have named Bigelow Laboratory in their estate plans are noted with an asterisk (\*). Sustaining members who make a recurring, monthly gift are noted with a double asterisk (\*\*).*

## COUNCIL MEMBERS

*We are immensely grateful to these donors, whose exceptional generosity has advanced our mission during the last year.*

Anonymous [7]  
Howard Adams  
Nick and Jessie Alberding  
The Justin & Rachael Alford Fund at the Maine Community Foundation  
Charles and Donna Bagley  
Liz and David Bengis  
Mariann and Jonathan Bigelow  
Stewart and Nancy Bither  
Pete Bixler  
Blue Dot Foundation  
Dr. Joceline Boucher  
Louise Bowditch\*  
Renée and Scott Bowie  
Dr. Deborah A. Bronk  
Bill and Barbara Burgess  
Gena Canning  
Estate of Donna Lee Cheney\*  
H. Lawrence Clark  
The Comer Foundation Fund  
Consigli Construction Co., Inc.  
Patricia and Thomas Cotter  
David Coulter and Susan Weeks

Andrew and Kathryn Davis  
The Shelby Cullom Davis Charitable Fund  
David W. Ellis and Marion S. Ellis\*  
Marion T. Flores  
Christopher and Jane Flower\*  
Dana and Mark Foster  
Kristina Gjerde and Adam de Sola Pool  
Jon and Sue Greenlee  
The Griffiths-Wennrich Family  
H.M. Payson  
Randall and Mary Hack  
Peter and Jocelyn Handy  
Robert Hayes  
Ina and Lewis Heafitz  
Robert and Margery Healing\*  
Alexandra and John Herger  
John and Mary Jo Heyl  
The Hildreth Family  
Edward and Melanie Hodgdon\*  
Jon and Bev Holt  
Marion and Mark Howard

James L. Jaeger  
Randy and Kimberly Jeffery  
Sarah Jeffords  
Russell and Mary Jeppesen  
James L. Joslin  
Estate of Barbara A. LaVoy\*  
Jane C. MacElree  
Arthur and Elizabeth Martinez  
Dr. Mark Mason  
Clement and Linda McGillicuddy  
Dyke Messler  
The Muir Family  
Susie and Jim Newton  
Helen Norton  
Dr. Beth N. Orcutt\*  
David and Mary Otto  
Penny C. Paquette  
Herbert and Harriet Paris  
JoAnne Platt  
Abby D. Pratt  
Bruce and Linda Rasher  
Dana and Martha Robes  
Ronald Ross  
and Frederick Kraeuter\*

Louis and Honor Sage\*  
Schacknow Family Foundation, Inc.  
Alice Senko  
Gary Shaw and Susan Steele  
Estate of Peter Llewellyn Sheldon\*  
Chet and Evelyn Shuman  
The Snider Foundation  
Lindy Snider  
Joseph and Susan Spagnola  
Mary M. Spencer  
Barbara K. Sweet  
Paul and Chandler Tagliabue  
Susie and Marty Tendler  
Anna Marie and John E. Thron  
Peter P. Twining  
Kristin and Warren Valdmanis  
Palmer Walbridge Foundation  
Estelle Weedon  
Wilson Wilde Family Foundation  
Wendy Wolf and Mary Neal\*  
Philip Yasinski and Janet Reingold\*  
Robert C. Young, MD

Kathryn M. Bugbee  
Robert W. Burgess  
Linda J. Burley  
Laura Burns and Thomas Tiller  
Christopher and Kimberley Byrd  
Samuel and Claire Cabot  
Sam and Mariah Calagione  
Bradley Campbell  
Gena Canning  
Virginia Carr  
Paula Carreiro and Peter Branch  
Jill and Charlie Carrick  
Jeffrey Casey\*\*  
Amy Celentano  
David and Catherine Chaffin  
Janet R. Chamberlain  
Phoebe Chandler  
John Chapman\*\*  
Harry and Mary Ann Charlston  
Mary M. Chatterton  
William Chen and Michelle Ritz  
Dr. Sallie W. Chisholm  
Peter and Gail Cinelli  
Caren Clark  
Alan and Suzanne Cleveland  
Dick Cleveland and Betsy Evans  
Frederic M. and Barbara Clifford  
Kathryn and Ned Codd  
Lou and Codie Codispoti  
David and Margaret Coit  
Ken and Ginny Colburn  
Barbara and Ralph Colby  
Linda and John Coleman  
Capt. Bradford L. Collins  
Michael Conathan  
W. Robert and Carolyn Connor  
Torrey M. Cooke  
Lorena Cooper  
Anne Copeland and James Womack  
Lee Corbin\*\*  
Susan and Bob Corbin  
David A. Cormier  
John H. Corson  
and Karen E. Weiss-Corson  
John P. Cotton  
Paul and Louise Cowan  
Holly and Rory Cowan  
Leanne Cowley and Steven Galante  
Margaret and Thomas Creamer  
Margaret and Dick Curran  
Katie Curtis  
Jennifer R. Cutshall  
Elizabeth and Gordon Davis  
Alexander Davis  
and Michelle Henkin  
Diane Davis and Peter Frost  
John and Paula Davis  
Endicott and Nan Davison  
Geoffrey Dawson  
Nicole DeHoratius and Dieter Cohrs  
Kathy DeLorme  
Sheryl and Dana Demers  
Kelly Dennis  
Robert and Judith Dent  
Joe DePietro and Carol A. Metcalfe  
Carol DeTine and Roger Woodman  
Ann and Andy Devereaux  
Ted Dey and Mary Griffith  
John R. Dice^  
Chuck and Meg Dinsmore  
Pauline T. Dion  
Nancy L. Dodge  
Joseph and Caroline Donnelly

Kimberly Douglas  
Sallie and Ken Dowd  
Susan and Harold Downey  
Joseph and Jill Doyle  
James and Jane Draper  
Wendy and Gentner Drummond  
Fred Duffy and Wendy Whittington  
Debra Duggan  
Doreen Dun  
Jonathan H. Dunsford  
Mark Dvorozniak  
and Kathryn Barber  
David and Judy Eastwood  
Jayne Edman  
Peter Edwards and Tracy Robinson  
Elisabeth T. Eggleston  
Dr. Elizabeth E. Ehrenfeld  
Martha Ehrenfeld and Carla McKay  
Tina and David Ehrhardt  
Erik and Judith Ekholm  
Kari and Kamal Elias  
Jaki Ellis  
Thomas N. Elmer  
Kyle Emery  
Ben Emory  
Michael and Hanneke Enthoven  
Carol Ervin and Bailey Bolen  
Daniel and Grace Evans  
Mrs. Rene Evans  
Cathy and Alex Felton  
Margaret J. Fenderson  
Cynthia Fenneman  
Charles and Andrea Fijnvandraat  
Matt and Karen Filler  
Richard Finlay  
James and Linda Flynn  
Elizabeth Forde  
Robert and Marthe Forrester  
Emily Foster and Frank DiMora  
Rev. Sarah Foulger  
and Mr. Russell Hoffman  
Bill and Wendy Foulke  
Elizabeth and Bruce Found  
Nicholas and Barbara Fowler  
Northrup and Carole Fowler  
Isabel Fox  
Patricia Fox  
Richard Frantz and Jennifer Fox  
Gernot Friederich  
Martha and Frederick Fritz  
Jack and Holly Fulmer  
Robert and Susan Gagosian  
Gary and Charlene Gajewski  
Anne and Walter Gamble  
Peter Gardner and Patty Smith  
Bruce and Katherine Garren  
Leigh and Bob Garry  
Eileen Gebrian  
Philip and Amy Geier  
Irene Gerny  
Sarah Flower Getty  
Mr. and Mrs. Julio Perez  
Heather Gilbert  
and Robert Wofchuck  
John and Sarah Giles  
Ronald and Bonnie Ginger  
Gail A. Ginnetty  
Mary Glaser and Phil Billard  
Ibis and Richard Glass  
Monnie J. Gleeson\*\*  
Mazzie and Charles Gogolak  
Myles Goldfein  
Susan and Jeff Goodell

Jon Goodman  
Paul S. Goodof  
Allyson L. Goodwin  
Sandi Goolden  
Jack and Carol Goralnik  
John Green and Donna Busch  
Karin Gregory and Don Furman\*\*  
Rachel E. Grier-Reynolds  
Margaret E. Griffin  
Anne Groton and Chris Jacobs  
Evelyn and Jay Haberland  
William and Sally Haggett  
Eric and Sandi Hakanson  
Monica Halas and Robert O'Connor  
Marion and Stephen Hall  
Family Fund  
Carol and Andrew Hallowell  
William and Janet Hamblen  
Kim Hamilton  
and Barry Fitzsimmons  
Mary Ann and Stephen Handel  
Susan and Daniel Haney  
Bill and Jo Haney  
Mary and Tim Hanley  
Kay and Peter Hannah  
Harry Hanson  
and Ann Hollingsworth  
Steven Hantzis and  
Kathleen Flaherty-Hantzis  
Pamela and William Harford  
Charles P. Harriman  
Jane Harrington  
Eileen J. Harrison  
Michael and Trish Harrison  
Sarah P. Hart  
C. Keith and Beverly Hartley  
Bradford and Elizabeth Hastings  
Corrilla and James Hastings  
George G. Hayes  
Jonathan A. Hayes  
Marilyn and Jack Heise  
Nancy and Michael Henderek  
Donald Hendrich and Lynn Jenness  
Patricia Henry  
Dr. James D. Herbert Ph.D.  
Rodger and Jillian Herrigel  
Cameron and Michelle Hicks  
Louise B. Hill  
Celia Hinrichs and Saul Bloom  
Art Hoban  
Skip and Breeze Hobbs  
Audrey Hodgdon and Caleb Easton  
Timothy and Cathy Hodgdon  
The Hoitt Family  
Gwen E. Holloway  
Alice Howard  
Chip Howard and Susan Clark  
Jean M. Howe  
Richard and Mary Howe  
Barbara and Harry Howell  
Lianna Hubbell  
Lucy Hull and Bart Chapin  
Og and Nina Hunnewell  
Daniel Hunter  
and Mary Anne Moisan  
Sara Imboden  
Lew and Liz Incze  
Timothy A. Ingraham  
Ann and David Ingram  
Kathy and Brian Inman  
Orton P. Jackson, Jr.  
Jamien Jacobs and Gregg Raymond  
Caroline D. Janover  
Michael and Chantal Jennings

Eric and Debbie Johnson  
Jessica and Richard Johnson  
The Scott E. Johnson Family  
Bambi Jones and Tracy Moskovitz  
Rance and Jaqie Jones  
Shawn Jones\*\*  
Dr. Julia G. Kahrl  
Kay and John Kaiser  
Al and Suzanne Kalvaitis  
Michael H. Kaminski  
George and Louella Karthas  
Denise and Arthur Katsaros  
Bradley and Colleen Kehler  
Dawn and Steve Kelley  
Annabelle C. Kellogg  
Deb and John Kellstrand  
Satya Kaur Khalsa  
Robert and Dawn Kidd  
Dale and Katherine Kiefer  
John and Patricia Kieft  
Judith T. Kildow, Ph.D.  
John and Susan Kiley  
Janet and D. Whitney King  
Harold and Christine Kipp  
Loryn Kipp and Finnley MacDonald  
Melanie and Deryl Kipp  
Carol Kleis and Rex Parker  
Megan Ryan Kline and Robert Kline  
Carol S. Knapp  
David and Margo Knight  
Salley Knight  
Philip and Helen Koch  
Jaye Koontz  
James Kranzfelder  
Barbara R. Krech  
John B. Krupko M.D.  
Pam Kush  
Norbert Lachmann  
Norbert K. Lachmann  
Anton and Alison Lahnston  
Katie and Doug Lail  
David W. K. Lam  
Nancy Lamoreux and Robert Gold  
Dr. Peter F. Larsen  
David W. Lawrence  
Eric Lax and Karen Sulzberger  
John and Deborah Ledbetter  
Helen and John Leddy  
The Lenhart Family Trust  
Tom and Lynn Lenhart  
Michael Leonard  
Susan R. Leray  
Abbe Levin and Ron Arsenault  
Susan and Paul Levine  
Anne Lew  
Marlon and Trudy Lewis  
Richard D. Lewis  
Kathleen M. Leydon-Conway  
Robert Lightfoot and Sue Walker  
The Lindgren-Youngs  
Edward and Pamela Lingel  
Robert and Judith Linker  
Alex Logan and Cama Hagerthy  
Emmet and Ann Logue  
Lawrence and Wendy Logue  
Jeffrey and Ella Long  
Leigh and Henry Lowe  
Yain Lu and David Braslau  
Franklin and Nora Luke  
Morgan Lung  
John Lupton  
Gayle Lux  
Will and Patsy Mackenzie

## INDIVIDUALS

Anonymous [20]  
Thorkild Aarup  
John and Nancy Abbott  
Nancy Adam  
Nancy Adams  
Richard and Priscilla Alden  
Ellen Alderman  
and William Harwood  
Karine Alexander  
John and Barbara Allan  
Walter and Ann Allan  
Tom and Diana Allen  
James and Carol Allison  
William C. Allison IV  
Larry and Janie Anderson  
Louis and Chandra Appell  
Nancy Archibald  
Ann L. Armstrong

Bob and Judy Armstrong  
Ellen Asherman  
Simon Aubry  
Falan Austin  
Madge Baker  
Pamela Baker  
Patricia S. Baker  
Thomas Balch  
Dr. William M. Balch  
George and Anne Ball  
William and Margaret Bancroft  
Patience and Alan Banister  
Brian D. Barter  
and Mary L. Hammond  
Karen Bartholomew  
Ed and Mary Bartlett  
James R. Beale  
Georgia and Alfred Beauchemin  
Judy and David Beebe

Nancy and Michael Beebe  
Regina and Charles Begley  
Wendy and Alan Bellows  
Wesley and Jen Benbow  
Alex Bennett and Brooksley Born  
Richard and Betsy Benz  
Pat Berger  
Barbara and Michael Bernstein  
Chris Berry  
John F. Berry, CPA  
Alex Bezahler  
Mary Bigelow and Russell Barber  
Elizabeth and Thomas Bishop  
Thomas and Sonia Bissell  
Merritt and Martha Blakeslee  
Deedee Blane  
William and Susan Blethen  
Joyce Blossom  
Barbara and Clarke Blynn

James Boak and Karen Berg  
Dan Bookham and Jessie Davis  
George and Rose Bottger  
Peter B. Bowman  
Katherine Bradley  
and Matt McCracken  
Jay and Kate Brandeis  
Trudy and James Briggs  
Leila R. Bright  
The Bronk Family  
David and Anne Brooks  
Philip and Claire Brooks  
Priscilla Brooks  
and John Wigglesworth  
Jason Brown  
Nancy and Franklin Brown  
Sarah Bower Bua  
Alexander and Anne Buck  
Joyce and David Bukaty



Barry MacLean  
 Stephen L. Malcom  
 Joseph Mallory  
 Richard and Barbara Maloney  
 Sophia Manning  
 Penny Mardoian  
 Suzanne Marinell  
 Sally Marrer and Stephen Langlois  
 Andrew Marsters  
 Vera Ann Martinovich  
 Eleanor and John Masin  
 Atul Mathur and Monica Hanson  
 Dr. Patricia A. Matrai  
 Andrew and Penny^ Matthews  
 Dennis Maxwell and Jennifer Zuniga  
 Bob and Doris^ McAfee  
 Linda McCarthy  
 Beverley B. McCoid  
 Josephina  
 and Matthew McComiskey  
 Michael and Karen McConnell  
 Emily and Jonathan McDevitt  
 Mara McDonough\*\*  
 Hannah and James McGhee  
 Susan and Aims McGuinness  
 Louise McIlhenny  
 and Hugh Riddleberger  
 John and Jean McLlwin  
 The Honorable John R. McKernan  
 and The Honorable  
 Olympia J. Snowe  
 John F. McKown  
 Peter J. McLaughlin  
 and Jane Kitchel McLaughlin  
 Leslie B McNeill  
 Susan and Matthew McPhee  
 Katherine Mead-von Huene  
 Catherine A. Meisten  
 Karen S. Melican  
 Hamilton and Helen Meserve\*\*  
 Daniel Michalopoulos  
 Steve and Terri Michaud  
 Claudia and Michael Mickelson  
 Bonnie L. Miller  
 Richard Mitterling  
 Veronica Mollod  
 Andrew and Barbara Moore  
 Harold and Deborah Moorefield  
 Daniel Morgenstern  
 and Moriah Moser  
 Donald and Kathryn Morris  
 Susan V. Morris  
 Jody and Gar Morse  
 Rena Mosteirín and James Dobson  
 Warren R. Muir, Ph.D.  
 Kathy and Alan Muirhead  
 Francie Murray  
 Maizy Myers  
 Carol and Gino Nalli  
 The Nash Family  
 Leonard and Merle Nelson  
 Nancy and Richard Nelson  
 David and Elly Newbower  
 Ronald and Donna Newbower  
 Neil and Margaret Newton  
 Max Nibert  
 Brita Nilsson  
 Heidi Nitze  
 Jacqueline B. Norman  
 Gail P. Norstrom  
 Mary Nutt  
 Kate and Emile Nuwaysir  
 Karen and Steve O'Bryan  
 Gail Ogilvie

Catherine and Robert Olney  
 Lisa Olson and Lyman Page  
 Mr. and Mrs. Fred L. Orcutt, Jr.  
 Donald T. Osier  
 Violetta Otis  
 Allison and Lincoln Paine  
 John and Adrienne Peacock  
 Bradford Peck  
 Heidi Peta  
 Mark and Andrea Peters  
 Leonard and Caroline Peterson  
 Meredith Petrie  
 John J. Phillips  
 Jeff and Sherry Pike  
 Cassidy Pilate  
 I.J. and Peggy Pinkham  
 Gary Pisano  
 Elizabeth and Bruce Plummer  
 Michael and Penelope Pollard  
 Pam and Chris Polloni  
 David Porter  
 Turner Porter  
 Dr. Thomas A. Posever  
 and Ms. Anne E. Havinga  
 Paul J. Poulin  
 Susan Poulton  
 Alison and Todd Prawer  
 Bonita Preston  
 Bill Prince  
 George and Kathy Putnam  
 Carrie and Mark Pykett  
 Shawn and Alicia Raymond  
 Nick Record and Christine Selman  
 Ralph Record  
 Alan G. Redden  
 Sue and John Reed  
 Robert and Rimar Reed  
 Frank Rees  
 Irene Reilly  
 Janet W. Reit  
 Linda F. Renshaw  
 Kathleen and John Reny  
 J. Theodore and Betty Repa  
 Marianne C. Reynolds  
 Christopher Rice  
 Duncan and Elizabeth Richardson  
 Gail N. Richter  
 Joyce and James Richter  
 Joy Riemann  
 Cynthia Rigatti and Brian Ashe  
 Elizabeth Riley  
 Peter and Mary Ripley  
 Robert and Anne Ritchie  
 Marjorie and Lloyd Roberts  
 Elisabeth Robinson  
 Susan and Bruce Rockwood  
 Donald and Constance Rose  
 Josh Rosenblatt  
 Pat Roberts and Mike Rosenblatt\*\*  
 Katharine and Christian Roth  
 Robert Roth  
 George Routt  
 Michael and Elizabeth Rowan  
 Emery May Norweb Royall  
 and William Royall  
 James and Susan Russo  
 Michael Sacks  
 Linda and Sam Saltonstall  
 Mary R. Saltonstall  
 and John K. Hanson  
 Clare and Darlene Sampley  
 Alison Sander  
 Paula and David Sargent  
 Steve Saudek

Susan Saudek  
 Rebecca Schaffner  
 Jane Scharff  
 Jim Schatz and Peter Souza  
 Susanne Schex  
 Jennifer and Daniel Schildge  
 Kristina Schmidt  
 Karen and Rick Schneider  
 Gerhard and Rebecca Schoenthal  
 Kimberly and Taylor Schollmaier  
 Jean H. Schork  
 Nikki Schumann  
 and Anthony Giachetti  
 Daphne and Peter Schwab  
 Susan J. Scott  
 Robert and Lucille Scribner  
 Robert and Stella Mae Seamans  
 Kenneth and Judy Segal  
 Edward Seidel and Lisa Katz  
 Katelyn Seile  
 Rhonda Selvin and John Rasanen  
 Susan and Joe Seymour  
 Kathleen Shattuck  
 Harold and Barbara Shaw  
 Susan Sheffield  
 Gregory Sheldon  
 Eugenia M. Shepard  
 Alex Shube and Jasmina Kurtovic  
 Carol and George Shube  
 Lelan F. Sillin III, M.D.  
 Patricia and Eric Simonson  
 Shirley and Albert Sirois  
 Clifford L. Slayman, Jr.  
 Cary and Glenn Montgomery  
 Dr. Andrew Smith  
 and Dr. Carol Mansfield  
 David and Diane Smith  
 Jane Smith and Byron Borst  
 Joanne Smith  
 Phil and Holly Smith  
 Rhonda M. Smith  
 Sally Horner Smyser  
 Todd and Ondine Sniffin  
 Raymond Sokolowski  
 Lee Spence  
 Susan Spock and Caldwell Harrop  
 William W. Sprague, Sr.  
 Nora Spratt  
 Brittany J. St. Sauveur\*\*  
 Donald and Ingrid Stanley  
 James and Marilyn Steane  
 Judith K. Stein  
 Ned Steinberger and Denise Soucy, MD  
 Dr. Ramunas Stepanauskas  
 Doris Stockly  
 Henry and Barbara Stoebenau  
 Dr. Kevin B. Strange  
 Sarah Roberts Strouss  
 Andrew and Alice Sullivan  
 Eleanor and John Sullivan  
 Shanna and Bill Sullivan  
 Bob and Kari Suva  
 Karen and Robert Sweet  
 David and Paula Swetland  
 Paul and Susan Taylor  
 Paul and Julie Tenan  
 Frank and Monica Tew  
 Ann Thayer  
 Cynthia Thebaud  
 and John K. Hanson  
 Sally Thebaud  
 Valerie M. Young  
 Elaine and Jerry Youngblood  
 Alicia Zbehlik  
 Charles and Andrea Zigelman  
 Robert and Ruth Zollinger

Amy and Michael Thornton  
 Lisa Thors  
 Penelope Thumith  
 Erik and Carin Thyssen  
 Ivy and Ronald Timpe  
 Bruce and Nancy Tindal  
 Dr. Betty M. Torrance  
 Dr. Magdalena T. Tosteson\*\*  
 Diana and Gordon Tracz  
 Ed Trautman  
 Franz Treidler  
 Julia Trotman Brady  
 Dick Tucker and Pat Smith  
 Richard and Edith Tucker  
 Katharine Turpie  
 Caroline and Daniel Tyson  
 Cynthia and Matt Umscheid  
 Charles J. Utter  
 Teresa Valdepenas  
 Bernard and Josephine  
 van der Hoeven  
 Dr. Lloyd M. Van Lunen and Ms.  
 Margaret Wilson  
 Cecily Vaughan  
 Mrs. Frederick M. Viles  
 Kim and Philippe Villard  
 Thomas and Elizabeth Volpe  
 Mary A. Voskian  
 Kenneth Voss  
 and Katherine Kilpatrick  
 Pat Wadsworth  
 Hoyt Walbridge  
 and Stephanie Sewall  
 Sara Walbridge and Henry Barber  
 Cindy and Joe Walden  
 Carol Ward and Charles De Sieyes  
 Meg and Charles Ward  
 Aaron L. Warren  
 John Wasileski and Anne Knowles  
 Randi Williams  
 and Dale Watchowski  
 Susan and Steve Weems  
 Jessen Wehrwein  
 Judith Wells Warner  
 and James Warner  
 David and Marilyn Wenner  
 Charles and Gretchen Wessel  
 Lynne M. Wheat  
 and Thomas P. Peterffy  
 Kathleen M. and Robert M. Whelan, Jr.  
 Susan and Bruce Whettle  
 William F. Whitman  
 Edward and Kathleen Wiggin  
 Katharine Wilder  
 Jodie and Bruce Willard  
 Dana Turpie Wilson  
 Scott and Kimberly Winter  
 Timothy and Anne Wissler  
 Christine Wolfe and Michael Perry  
 Gordon Wolfe  
 Charles Wolfram  
 Bruce Wood  
 Sara Woodman  
 Sara Woodruff  
 Carolyn and Jeff Woods\*\*  
 Leslie Woods  
 Susan W. Wren  
 Kathleen Wright and Jeff Eilenberg  
 Billie and Alec Wyeth  
 Dr. Clarice M. Yentsch  
 Valerie M. Young  
 Elaine and Jerry Youngblood  
 Alicia Zbehlik  
 Charles and Andrea Zigelman  
 Robert and Ruth Zollinger

## FOUNDATIONS

Anonymous (3)  
 The Harold Alfond Foundation  
 American Endowment Foundation  
 The American Gift Fund  
 Melinda Gray Ardia Environmental  
 Foundation  
 The Associated  
 AYCO Charitable Foundation  
 Bangor Savings Bank Foundation  
 Bank of America Charitable  
 Gift Fund  
 Benevity Community Impact Fund  
 Blue Dot Foundation  
 The Boston Foundation  
 The Builders Initiative  
 Margaret E. Burnham  
 Charitable Trust  
 Cabbadetus Foundation  
 The Chicago Community Foundation  
 The Comer Foundation Fund

The Shelby Cullom Davis  
 Charitable Fund, Inc.  
 Davis Conservation Foundation  
 The Dobson Foundation, Inc.  
 Enthoven Foundation Inc.  
 Fidelity Charitable Gift Fund  
 Fish Hawk Foundation  
 Sylvester and Stanhope  
 Foster Foundation  
 Give Lively  
 Greater Worcester  
 Community Foundation  
 The Randall & Mary Hack  
 Foundation  
 Harvard University  
 Horizon Foundation, Inc.  
 ImpactAssets  
 Louise H. and David S. Ingalls  
 Foundation  
 J.P. Morgan Charitable Giving Fund  
 Jane's Trust Foundation

Jonathan D. Krist Foundation  
 Libra Foundation  
 Maine Community Foundation  
 The Manton Foundation  
 Marr-Anderson Family Foundation  
 Messler Family Foundation  
 Middlecott Foundation  
 Morgan Stanley Global  
 Impact Funding Trust, Inc.  
 Wells Morss Charitable Lead  
 Unitrust  
 Morton-Kelly Charitable Trust  
 Network for Good  
 The New York Community Trust  
 Norweb Foundation  
 Onion Foundation  
 The Pascualano Foundation  
 William Procter Scientific  
 Innovation Fund  
 Raymond James Charitable  
 Charles L. Read Foundation

Renaissance Charitable Foundation  
 Reny Charitable Foundation  
 Roederer Trust for Science  
 and Medicine  
 Adelard A. and Valeda Lea Roy  
 Foundation  
 Schacknow Family Foundation, Inc.  
 Schwab Charitable Fund  
 Sibley-Saltonstall Charitable  
 Foundation  
 The Snider Foundation  
 RJM Stein Family Foundation  
 A.R. and Marylouise Tandy  
 Foundation  
 The Triton Foundation  
 U.S. Charitable Gift Trust  
 Vanguard Charitable  
 The G. Unger Vetlesen Foundation  
 Palmer Walbridge Foundation  
 Rodney L. White Foundation  
 Wilson Wilde Family Foundation

## GIFTS IN HONOR OF

William P. Adams  
*from Howard Adams*  
 Brooke Asherman  
*from Ellen Asherman*  
 Cindy Bailey  
*from Anonymous*  
 Dr. Deborah A. Bronk  
*from Allyson L. Goodwin  
 and Kenneth S. Monroe*  
 Barbara and Bill Burgess  
*from Karen and Rick Schneider*  
 Misia Delgado  
*from Alicia Zbehlik*  
 Eileen and Jill  
*from Anne Lew*  
 Dr. David Fields  
*from Matt and Karen Filler*  
 Chris Flower  
*from Sarah Flower Getty*  
 Bob and Marge Healing  
*from Herbert and Harriet Paris*  
 Marion Howard  
*from Sally Marrer  
 and Stephen Langlois*  
 Randy and Kim Jeffery  
*from Frank and Monica Tew  
 and Jessen Wehrwein*  
 Dr. Paty Matrai  
*from Dr. Carol Mansfield  
 and Sandy and Honor Sage*

Dr. Jim McManus  
*from Dan Bookham*  
 Dr. Alexander Michaud  
*from Steve and Terri Michaud*  
 Dr. Beth Orcutt  
*from Anonymous,  
 Bradley and Colleen Kehler, and  
 Mr. and Mrs. Fred L. Orcutt, Jr.*  
 JoAnne Platt  
*from Cynthia Rigatti and Brian Ashe*  
 Steven Profaizer  
*from Springtide Studio*  
 Dr. Doug Rasher  
*from Bruce and Linda Rasher*  
 Jacob P. Richards  
*from David and Diane Smith*  
 Shane Savage  
*from Susan and Bob Corbin*  
 Chris Vooght  
*from Anonymous*  
 David Whitt  
*from Anonymous  
 and Dan Bookham*  
 Dana Wilson  
*from Springtide Studio*  
 Wendy WolfMcIlhenny  
*from Louise McIlhenny  
 and Hugh Riddleberger*  
 Sadie Woodruff  
*from Sara Woodruff  
 and Susan and Bob Corbin*  
 Dr. Clarice M. Yentsch  
*from Clare and Darlene Sampley*

## GIFTS IN MEMORY OF

J. Lon Andrews  
*from Kenneth S. Monroe*  
 Spencer Apollonio  
*from Carol DeTine and  
 Roger Woodman, Paty Matrai and  
 Barney Balch, Joyce Sirois,  
 and Dr. Clarice M. Yentsch*  
 Elaine Bennett  
*from Jim Bennett*  
 Donna Lee Cheney  
*from Rose and George Bottger,  
 Jennifer R. Cutshall, Kelly Dennis,  
 Margaret J. Fenderson,  
 Christopher and Jane Flower,  
 Sandra L. Goolden, Charles P.  
 Harriman, Franklin and  
 Nora Luke, Linda McCarthy,  
 John F. McKown, Sandy and  
 Honor Sage, Penelope Thumith,  
 and Carol Ward and Charles  
 De Sieyes*  
 Donna Cuddy  
*from Charles  
 and Andrea Zigelman*  
 Priscilla Alden Hayes  
*from Richard and Priscilla Alden,  
 Pamela Baker, Jill and Charlie  
 Carrick, Kathryn and Ned Codd,  
 Gail A. Ginetty, Jonathan A.  
 Hayes, Dr. Robert H. Hayes,  
 Sara Imboden, Joseph Mallory,  
 Gary Pisano, Alex Shube and  
 Jasmina Kurtovic, Carol and  
 George Shube, Lisa Thors, and  
 Cynthia and Matt Umscheid*

Maureen Keller  
*from Gordon V. Wolfe*  
 Gene McCoy  
*from Kenneth S. Monroe*  
 Dick Morrell  
*from Sandy and Honor Sage*  
 Mr. and Mrs. Shepard B. Palmer  
*from Elizabeth and Bruce Found*  
 Tracey Skinner Riggins  
*from Deborah and John Kellstrand*  
 Cameron Roletter  
*from Michael H. Kaminski  
 and Linda F. Renshaw*  
 Ron Serina  
*from The Hoitt Family*  
 Dr. Robert A. Shepard  
*from Eugenia M. Shepard*  
 Dr. Graham B. Shimmield  
*from Donna Lee Cheney\*\*  
 and Gary Shaw and Susan Steele*  
 Carolyn Walch Slayman  
*from Clifford L. Slayman, Jr.*  
 Maryann Smith  
*from Margaret and Thomas  
 Creamer and Kathy DeLorme  
 and Jayne Edman*  
 Dottie Sokolowski  
*from Raymond Sokolowski*  
 Deb Twining  
*from Linda and Sam Saltonstall*  
 D. Reid Weedon, Jr.  
*from Estelle Weedon*  
 Charlie Yentsch  
*from Marlon and Trudy Lewis*

## CORPORATE

Abbott Laboratories  
 Allen Insurance and Financial  
 AmazonSmile Foundation  
 Boeing Company  
 Bristol-Myers Squibb  
 Matching Gift Program  
 Cheney Financial Group  
 Christmas Cove Improvement  
 Association  
 Consigli Construction Co., Inc.  
 Eric Wood Construction  
 First National Bank  
 Gorham Savings Bank  
 H.M. Payson  
 Hall Funeral Homes  
 Hannaford Supermarket

Helm Digital / First Pier  
 Johnson & Johnson  
 Matching Gifts Program  
 JPMorgan Chase & Co.  
 Knickerbocker Group, Inc.  
 Legacy Properties Sotheby's  
 International Realty  
 Maine Beer Company  
 Maine Boats, Homes & Harbors  
 Maine Coast Sea Vegetables  
 Pine State Trading Co.  
 Seagreen Sustainables LLC  
 Springtide Studio  
 Stage Neck Inn  
 TD Ameritrade  
 Tindal & Callahan Real Estate  
 Warburg Pincus LLC

## WAYS TO GIVE

Would you like to help make our ocean discoveries possible? We offer several easy ways to make your fully tax-deductible donation.

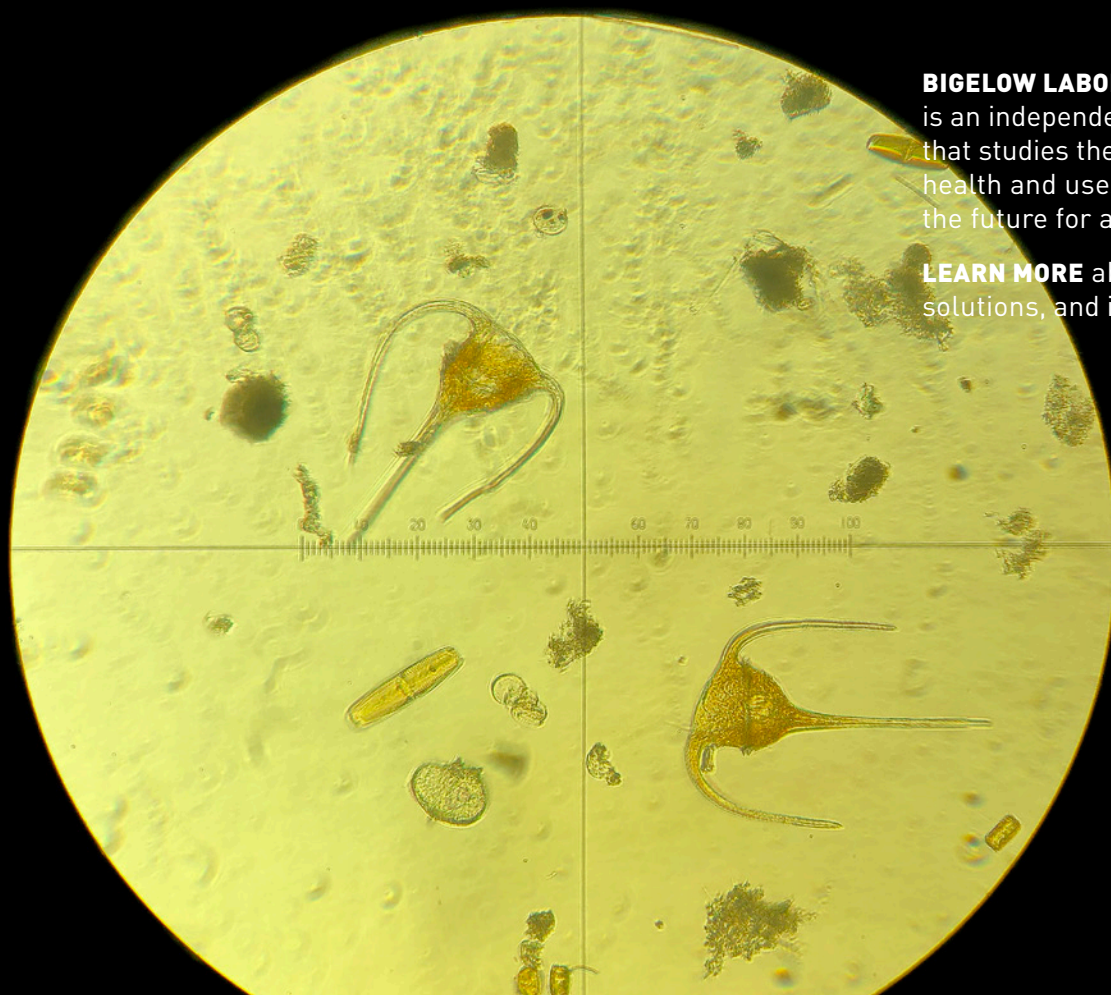
**BY PHONE** Call Bigelow Laboratory's Advancement Team to make a credit card gift over the phone at 207-315-2567 x106

**ONLINE** Donate to Bigelow Laboratory via credit card using our secure online form at bigelow.org/support

**BY MAIL** Send checks to Bigelow Laboratory for Ocean Sciences, 60 Bigelow Drive, East Boothbay, ME 04544







**BIGELOW LABORATORY FOR OCEAN SCIENCES** is an independent, nonprofit research institute that studies the foundation of global ocean health and uses our discoveries to improve the future for all life on the planet.

**LEARN MORE** about our ocean discoveries, solutions, and inspiration at **[bigelow.org](http://bigelow.org)**.